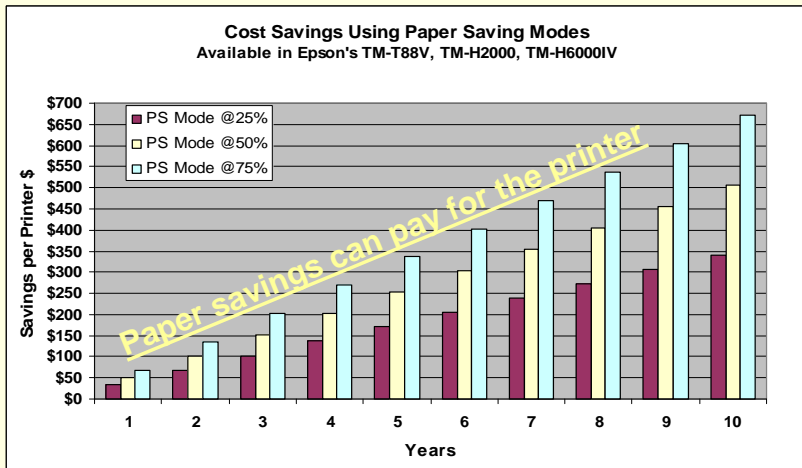




## Printers That Pay

### Reduced paper consumption

Epson's paper saving modes can reduce paper usage by more than 25%



### Lower power usage

Epson's Energy Star printers consume, on average, 1/3 to 1/4 of the power compared to competitive models



#### TM-T88V Receipt Printer

Consumes about 1/3 of the power vs. competitive models  
Industry leading 300mm/sec print speed  
Highest reliability in it's class  
16 levels of grayscale for exceptional graphics  
Dual Interface

**Paper Saving Modes**  
Uses 25% less paper



**Energy Star Qualified**  
Uses up to 89% less power



#### TM-H6000IV Multifunction Printer

Consumes about 1/4 of the power vs. competitive models  
Industry leading 300mm/sec thermal print speed  
High MICR read accuracy 99.9%  
16 levels of grayscale for exceptional graphics  
Advanced quickpass check processing

# EPSON Paper Reduction

## How it works

- Margin Reduction
- Space Reduction
- Bar Code Reduction

*Will not adversely effect print quality*

Paper Reduction Settings	
Setting	Description
Extra Upper Space Reduction	Selects whether to reduce the upper margin or not. Enable this to cut out the extra upper margin that is created before the first print data is printed. Options = <b>Enable</b> / Disable
Extra Lower Space Reduction	Selects whether to reduce the lower margin or not. Enable this to cut out the lower margin that is created from the time the last line is printed until the paper is automatically cut. Options = <b>Enable</b> / Disable
Line Space Reduction Rate	Selects a reduction ratio of line spacing during printing. The minimum pitch is two dots. If reduction results in a line spacing of less than 2 dots, the line spacing will be reset to 2 dots. Options = 25% / 50% / <b>75%</b>
Line Feed Reduction Rate	Selects a reduction ratio of line spacing of blank lines. Options = 25% / 50% / <b>75%</b>
Barcode Height Reduction Rate	Selects a reduction ratio of barcode height. Options = 25% / 50% / <b>75%</b>

**Bold** = Settings to deliver savings as shown.

## Easy set up through the utility or directly through the printer

TM-T88V Utility Ver.1.11

Current Settings  
Operation Check  
Storing Logos  
**Paper Reduction**  
Automatic Paper Cut  
[Advanced]  
Printing Control  
Font  
Optional Buzzer  
Communication I/F  
Backup/Restore

### Paper Reduction Settings

Extra Upper Space Reduction:

Extra Lower Space Reduction:

Line Space Reduction Rate:

Line Feed Reduction Rate:

Barcode Height Reduction Rate:

Normal:

Paper Reduction:

Set

TM-T88V 30.12 ESC/POS  
Port: USB-001

Alphanumeric  
Status: Online

Serial No: MXAF000122

- 4. Automatic Paper Reduction
  - 4.1. Upper Margin > Enable
  - 4.2. Lower Margin > Enable
  - 4.3. Blank Line Spacing > 75%
  - 4.4. Blank Space > 75%
  - 4.5. Barcode Height > 75%



# EPSON®

EXCEED YOUR VISION



# Less Waste More Speed

## Cost-effective Receipt Printers that can Save You Over 30% Paper Usage

TM-T88V  
ReadyPrint T20  
TM-H600IV



30% Less!



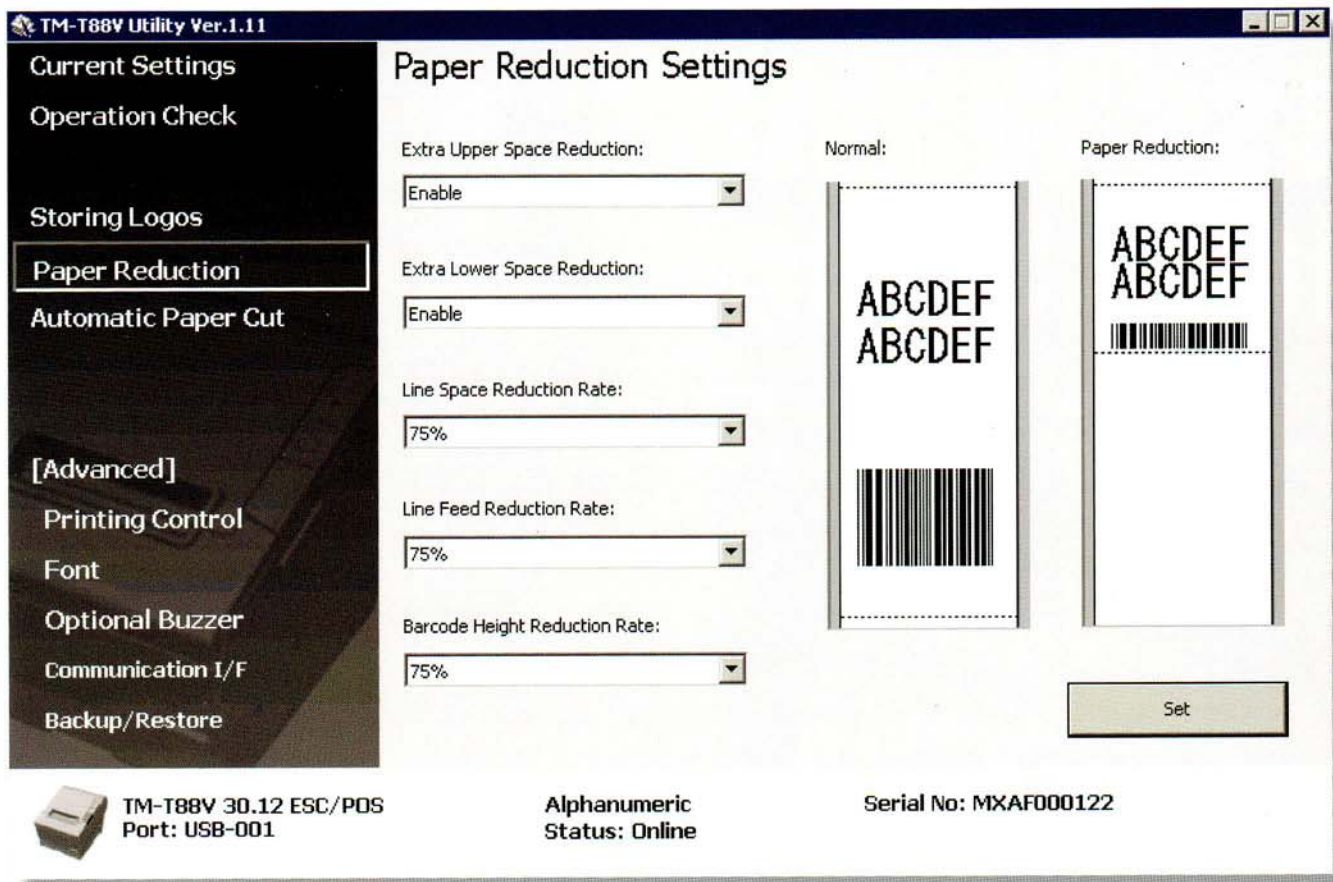
**TM-T88V Receipt Printer**  
Offers 50% faster printing of text and graphics than the TM-T88IV, 35% more reliability, new ease-of-use features and dual interfaces. In addition, multiple configurations meet ENERGY STAR requirements.



**ReadyPrint T20 Receipt Printer**  
The cost-effective ReadyPrint™ T20 thermal printer is designed specifically to meet the needs of low volume retailers for basic POS printing functionality.



**TM-H600IV Multifunction Printer**  
Delivers high-speed receipt and slip printing, endorsement and advanced QuickPass™ check processing all in one compact multifunction printer. It also features the industry's leading MICR reader with over 99.9% accuracy. ENERGY STAR® qualified.



## 4.0 Automatic Paper Reduction

### 4.1 Upper Margin > Enable

### 4.2 Lower Margin > Enable

### 4.3 Blank Line Spacing > 75%

### 4.4 Blank Space > 75%

### 4.5 Barcode Height > 75%

#### Setting

Extra Upper Space Reduction

Extra Lower Space Reduction

Line Space Reduction Rate

Line Feed Reduction Rate

Barcode Height Reduction Rate

#### Description

Selects whether to reduce the upper margin or not. Enable this to cut out the extra upper margin that is created before the first print data is printed. Options = **Enable** / Disable

Selects whether to reduce the lower margin or not. Enable this to cut out the lower margin that is created from the time the last line is printed until the paper is automatically cut. Options = **Enable** / Disable

Selects a reduction ratio of line spacing during printing. The minimum pitch is two dots. If reduction results in a line spacing of less than 2 dots, the line spacing will be reset to 2 dots. Options = 25% / 50% / **75%**

Selects a reduction ratio of line spacing of blank lines. Options = 25% / 50% / **75%**

Selects a reduction ratio of barcode height. Options = 25% / 50% / **75%**

**Bold** = Settings to deliver savings as shown.

# EPSON Paper Reduction

## Paper Reduction Settings

<u>Setting</u>	<u>Description</u>
Extra Upper Space Reduction	Selects whether to reduce the upper margin or not. Enable this to cut out the extra upper margin that is created before the first print data is printed. Options = <b>Enable</b> / Disable
Extra Lower Space Reduction	Selects whether to reduce the lower margin or not. Enable this to cut out the lower margin that is created from the time the last line is printed until the paper is automatically cut. Options = <b>Enable</b> / Disable
Line Space Reduction Rate	Selects a reduction ratio of line spacing during printing. The minimum pitch is two dots. If reduction results in a line spacing of less than 2 dots, the line spacing will be reset to 2-dots. Options = 25% / 50% / <b>75%</b>
Line Feed Reduction Rate	Selects a reduction ratio of line spacing of blank lines. Options = 25% / 50% / <b>75%</b>
Barcode Height Reduction Rate	Selects a reduction ratio of barcode height. Options = 25% / 50% / <b>75%</b>

**Bold** = Settings to deliver savings as shown.

TM-T88V Utility Ver.1.11

Current Settings  
Operation Check  
Storing Logos  
**Paper Reduction**  
Automatic Paper Cut  
[Advanced]  
Printing Control  
Font  
Optional Buzzer  
Communication I/F  
Backup/Restore

### Paper Reduction Settings

Extra Upper Space Reduction:

Extra Lower Space Reduction:

Line Space Reduction Rate:

Line Feed Reduction Rate:

Barcode Height Reduction Rate:

Normal:

Paper Reduction:

Set

TM-T88V 30.12 ESC/POS  
Port: USB-001

Alphanumeric  
Status: Online

Serial No: MXAF000122

### 4. Automatic Paper Reduction

- 4.1. Upper Margin  
> Enable
- 4.2. Lower Margin  
> Enable
- 4.3. Blank Line Spacing  
> 75%
- 4.4. Blank Space  
> 75%
- 4.5. Barcode Height  
> 75%

155mm



0206 Table 59 #Party 2  
11/30/2010 4:27:54 PM SvrCk: 3 Megan S

2 Peroni Draft	9.50
1 Water	
1 Shooter	8.95
1 BBQ Chip	9.95
1 SWest Chip	9.75
1 Chzcake w/ Berry	6.95
1 Choc Cake	6.50
1 SanPellgrino	3.95

Sub Total:	55.55
Tax:	4.44
Sub Total:	59.99

**TOTAL : 59.99**

Tavern @ Phipps 404-814-9640  
Visit our newest restaurant  
Lenox Square Grill

108mm / Reduction = 30%



0206 Table 59 #Party 2  
11/30/2010 4:21:14 PM SvrCk: 3 Megan S

2 Peroni Draft	9.50
1 Water	
1 Shooter	8.95
1 BBQ Chip	9.95
1 SWest Chip	9.75
1 Chzcake w/ Berry	6.95
1 Choc Cake	6.50
1 SanPellgrino	3.95

Sub Total:	55.55
Tax:	4.44
Sub Total:	59.99

**TOTAL : 59.99**

Tavern @ Phipps 404-814-9640  
Visit our newest restaurant  
Lenox Square Grill

140mm

101mm / Reduction = 28%

**TOAST ON THE BEACH**  
TORONTO PEARSON INT'L AIRPORT

2056 Voyo

-----			
11/30/2010	4:30:30 PM		2301
-----			
1 Molson Dft			7.39
Side Shot No			
Subtotal			7.39
Service Charge			2.00
7.39 GST	217101		0.37
7.39 PST Liqor	217010		0.74
<b>AMOUNT</b>			<b>10.50</b>
Charged Tip			2.00
XXXXXXXXXXXXXXXXXX			XX/XX
Amex			10.50

HMSHost  
GST # 137512901  
Thank you, Questions & Comments  
toronto.comments@hmshost.com

**Your Order Number is: 2301**

**TOAST ON THE BEACH**  
TORONTO PEARSON INT'L AIRPORT

2056 Voyo

-----			
11/30/2010	4:22:56 PM		2301
-----			
1 Molson Dft			7.39
Side Shot No			
Subtotal			7.39
Service Charge			2.00
7.39 GST	217101		0.37
7.39 PST Liqor	217010		0.74
<b>AMOUNT</b>			<b>10.50</b>
Charged Tip			2.00
XXXXXXXXXXXXXXXXXX			XX/XX
Amex			10.50

HMSHost  
GST # 137512901  
Thank you, Questions & Comments  
toronto.comments@hmshost.com

**Your Order Number is: 2301**

204mm

### The Glass House Tavern

252 West 47th Street  
New York, NY 10036  
(212) 730-4800

#### Lunch

Table#: 23

11/30/2010

Person: 1,2,3,4

Time	Check #	Srvr
4:29:05 PM	40073	Alain

1	Scallops	10.95
1	Side Fries	4.95
1	Scallops	13.95
1	Pork Chop	22.95
1	Lamb Shank	24.95
1	Apple Streudel	5.95
1	Warm Choc Cake	5.95
1	Water 750 ml	4.95
3	Stoli	30.00

Food Sub-Total	89.65
Beverage Sub-Total	34.95
Gratuity	00.00
SUB TOTAL	124.60

SALES TAX 11.06

**TOTAL 135.66**

THANK YOU FOR DINING WITH US!  
VISIT ZAGAT.COM TO RATE  
THE GLASS HOUSE TAVERN!

141mm / Reduction = 31%

### The Glass House Tavern

252 West 47th Street  
New York, NY 10036  
(212) 730-4800

#### Lunch

Table#: 23

11/30/2010

Person: 1,2,3,4

Time	Check #	Srvr
4:22:20 PM	40073	Alain

1	Scallops	10.95
1	Side Fries	4.95
1	Scallops	13.95
1	Pork Chop	22.95
1	Lamb Shank	24.95
1	Apple Streudel	5.95
1	Warm Choc Cake	5.95
1	Water 750 ml	4.95
3	Stoli	30.00

Food Sub-Total	89.65
Beverage Sub-Total	34.95
Gratuity	00.00
SUB TOTAL	124.60
SALES TAX	11.06

**TOTAL 135.66**

THANK YOU FOR DINING WITH US!  
VISIT ZAGAT.COM TO RATE  
THE GLASS HOUSE TAVERN!

151mm

# Ciao

185 Bleeker Street  
New York, NY 10082  
212-673-8901

## Table #8

Trans#: 38388 Serv: Vasco  
11/30/2010 4:28:48 PM # Cust: 3

Quan	Descript	Cost
1	Peroni	\$6.00
1	Cozze Affogate	\$12.00
1	Calamari Griglia	\$12.00
1	Paillard de Pollo	\$18.00
1	Tonno Siciliano	\$23.00

Net Total: \$71.10  
Tax \$6.12

Tip: 14.20  
Total: 91.32  
=Tip Included=

Food: \$65.00  
Liquor: \$6.00

Try Our  
Sunday Brunch

113mm / Reduction = 25%

# Ciao

185 Bleeker Street  
New York, NY 10082  
212-673-8901

## Table #8

Trans#: 38388 Serv: Vasco  
11/30/2010 4:22:00 PM # Cust: 3

Quan	Descript	Cost
1	Peroni	\$6.00
1	Cozze Affogate	\$12.00
1	Calamari Griglia	\$12.00
1	Paillard de Pollo	\$18.00
1	Tonno Siciliano	\$23.00

Net Total: \$71.10  
Tax \$6.12

Tip: 14.20  
Total: 91.32  
=Tip Included=

Food: \$65.00  
Liquor: \$6.00

Try Our  
Sunday Brunch

215mm

# Top Spice

Thai & Malasian Cuisine  
2997 Cobb Parkway SE Suite 200  
Atlanta, GA 30339  
(770) 988-9007

Tony C 143034  
11/30/2010 Table: 9  
4:31:36 PM Gst 2

1 Shrimp Dumpling	4.95
1 Shrimp Coconut	4.25
1 Stolichnaya	7.00
Martini	1.00
1 GL Riesling	7.00
1 Seabass Basil	19.95
1 Honey B. Lobster	22.95
1 Stolichnaya	7.00
Martini	1.00

Subtotal: 75.10  
Tax: 4.51  
Liquor: .42

**Total: 80.03**

Tip Guide  
15 %: 11.27  
18 %: 13.52  
20 % 15.02

TOPSPICEATLANTA.COM

Gift Certificates Available

Carry Out. Delivery. Catering.

142mm / Reduction = 34%

# Top Spice

Thai & Malasian Cuisine  
2997 Cobb Parkway SE Suite 200  
Atlanta, GA 30339  
(770) 988-9007

Tony C 143034  
11/30/2010 Table: 9  
4:23:53 PM Gst 2

1 Shrimp Dumpling	4.95
1 Shrimp Coconut	4.25
1 Stolichnaya	7.00
Martini	1.00
1 GL Riesling	7.00
1 Seabass Basil	19.95
1 Honey B. Lobster	22.95
1 Stolichnaya	7.00
Martini	1.00

Subtotal: 75.10  
Tax: 4.51  
Liquor: .42

**Total: 80.03**

Tip Guide  
15 %: 11.27  
18 %: 13.52  
20 % 15.02

TOPSPICEATLANTA.COM

Gift Certificates Available  
Carry Out. Delivery. Catering.

153mm

114mm / Reduction = 25%

### House of Italy Pizza & Pasta

FINA BISTRO  
2350 Cheshire Bridge Rd NE  
College Park, GA 30337  
404-352-9994

Server: Kay Station 2

Order #:85777 Table: 3 Dine In

1 Shrimp Frandiavoloa	9.00
1 Portobello	8.00
1 White Glass Chardonnay	7.00
1 Bottle Beer	4.25
1 Cheese Cake	6.00
1 Large Pellegrino	5.00
1 Pear Salad	10.00
1 Mussels	9.00
1 Fruti di mare	15.00

SUB TOTAL:	73.25
SALES TAX:	5.13

AMOUNT DUE: \$78.38

>> Ticket #: 13 <<  
11/30/2010 4:32:26 PM

### House of Italy Pizza & Pasta

FINA BISTRO  
2350 Cheshire Bridge Rd NE  
College Park, GA 30337  
404-352-9994

Server: Kay Station 2

Order #:85777 Table: 3 Dine In

1 Shrimp Frandiavoloa	9.00
1 Portobello	8.00
1 White Glass Chardonnay	7.00
1 Bottle Beer	4.25
1 Cheese Cake	6.00
1 Large Pellegrino	5.00
1 Pear Salad	10.00
1 Mussels	9.00
1 Fruti di mare	15.00

SUB TOTAL:	73.25
SALES TAX:	5.13

AMOUNT DUE: \$78.38

>> Ticket #: 13 <<  
11/30/2010 4:24:55 PM

185mm

# Eclipse Di Luna

404-846-0449

Server: Beth  
11/30/2010  
4:33:05 PM

Table 2/1  
Guests: 2

# 30006

Stoli (2 @8.50)	17.00
Martini	
Calamari	5.25
Mussels	5.25
Cosmopolitan	7.50
Tuna	5.50
Salmon	5.25
Ceviche	5.95
Plantains	4.50
Shrimp	4.95
Bacardi Mojito	8.00

Sub Total	69.15
Tax	6.51

Total 75.66

**Balance Due 75.66**

Every Monday-All You Can Eat  
For \$15.00 Per Person  
Lunch - \$5.00 off purchase of  
\$20.00 or more until 4p.m.  
with this receipt! 1-per table  
[www.eclipsediluna.com](http://www.eclipsediluna.com)

129mm / Reduction = 30%

# Eclipse Di Luna

404-846-0449

Server: Beth  
11/30/2010  
4:25:11 PM

Table 2/1  
Guests: 2

# 30006

Stoli (2 @8.50)	17.00
Martini	
Calamari	5.25
Mussels	5.25
Cosmopolitan	7.50
Tuna	5.50
Salmon	5.25
Ceviche	5.95
Plantains	4.50
Shrimp	4.95
Bacardi Mojito	8.00
Sub Total	69.15
Tax	6.51
Total	75.66

**Balance Due 75.66**

Every Monday-All You Can Eat  
For \$15.00 Per Person  
Lunch - \$5.00 off purchase of  
\$20.00 or more until 4p.m.  
with this receipt! 1-per table  
[www.eclipsediluna.com](http://www.eclipsediluna.com)